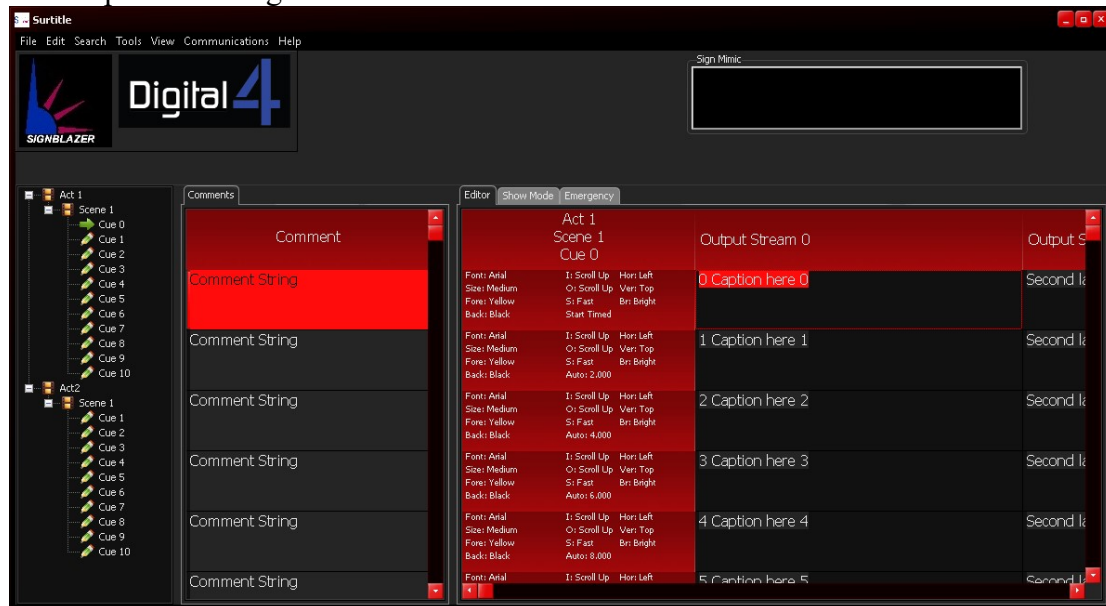
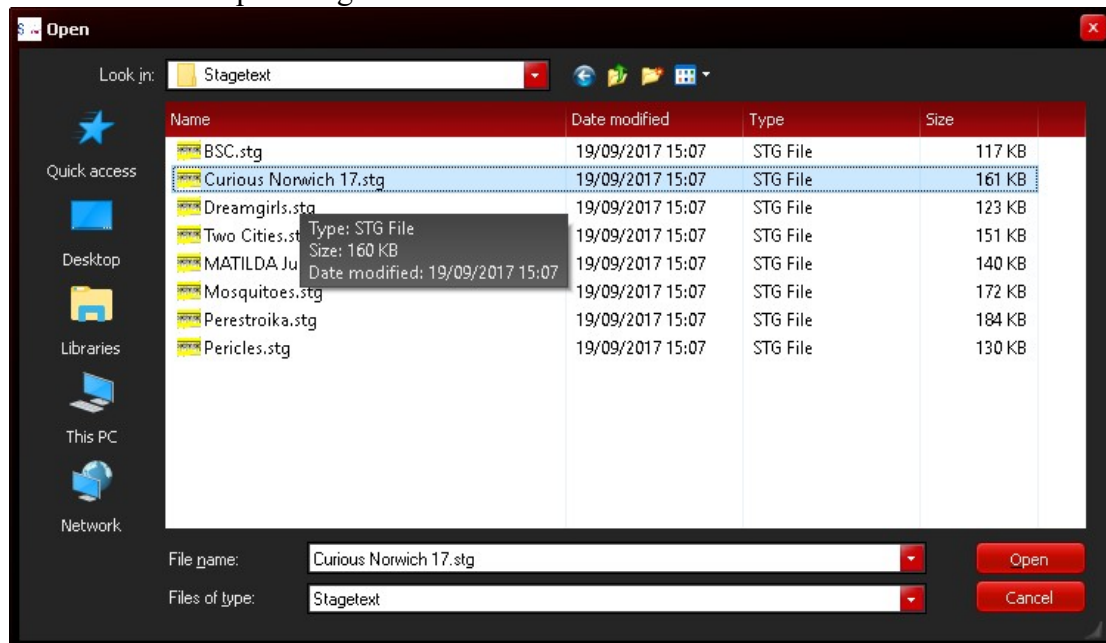


How to import a Stagetext File and output using SopraText

Run SopraText and get a screen like this:

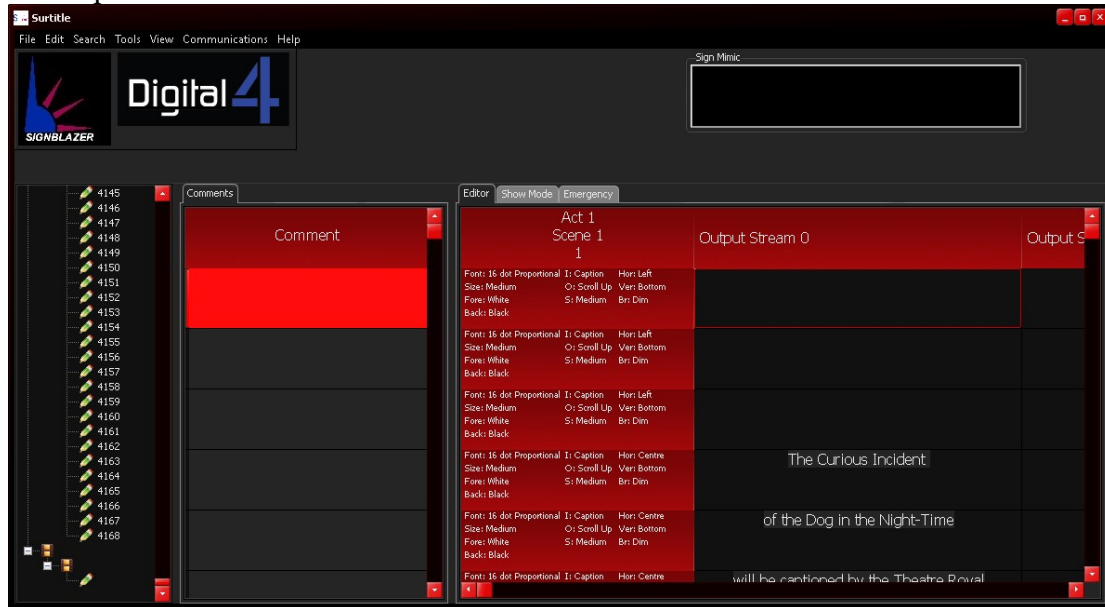


Go to File and Import Stagetext:

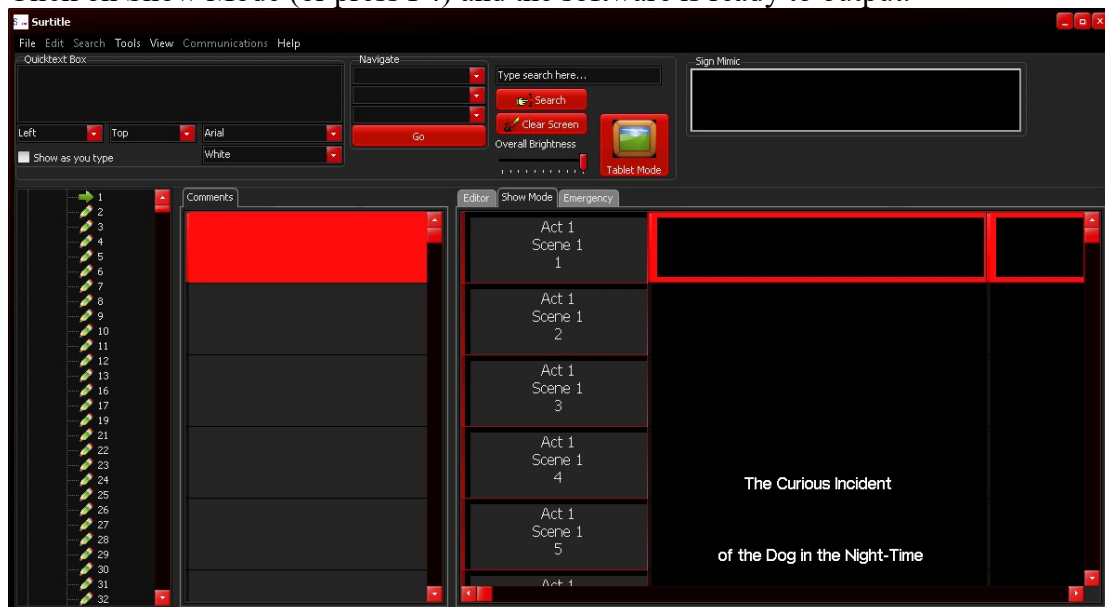


Choose and load your file (click Open)

The captions are then loaded.



Click on Show Mode (or press F4) and the software is ready to output.



This assumes that the sign(s) or other output devices have already been set up. Please refer to the main manual for this detail.